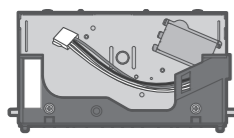


Replacement Procedure for mC-Label3 Cutter Unit

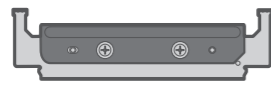


Accessories

If any of the package contents are missing or damaged, contact the dealer where the product was purchased.



□ Cutter unit



□ Stationary knife

□ Replacement procedure sheet (this manual)

Check Video

You can check the procedure for replacing the cutter unit in the video in the mC-Label online manual.



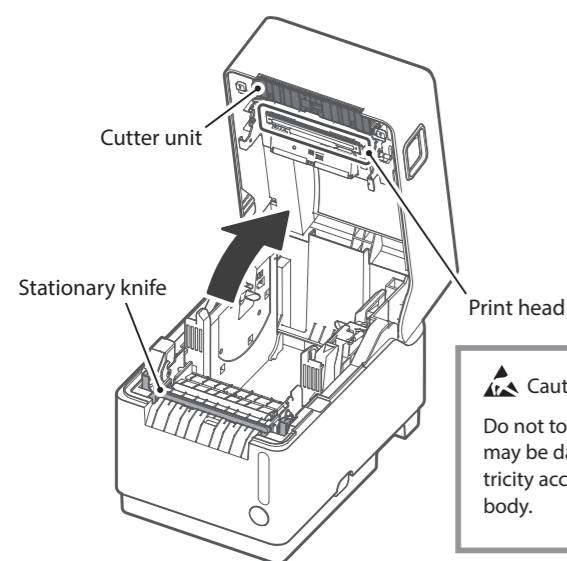
Caution

- Be sure to turn off the printer power before performing replacement work.
- Be careful not to damage any other parts when performing replacement work. Also, be sure to follow the described instructions to the end.
- When handling the stationary knife, hold the blue tab. Also, please handle with care to avoid injury from the blade.

Removing the Cutter Unit and Stationary Knife

1. Open the printer cover.

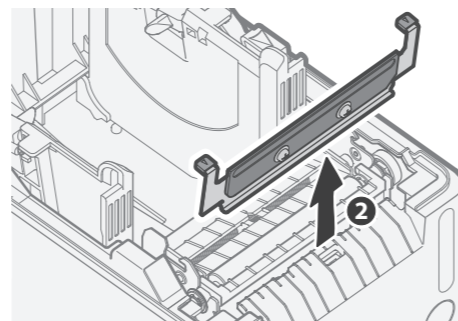
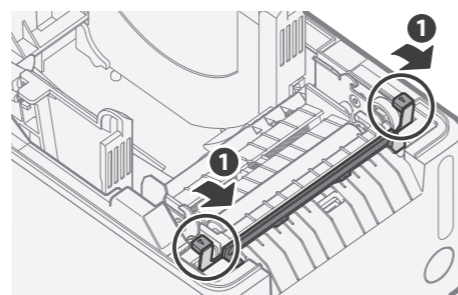
- Pull the cover opening lever toward you and open the printer cover.
- If label paper is loaded, remove it.



Caution for static electricity:
Do not touch the print head as it may be damaged by static electricity accumulated in the human body.

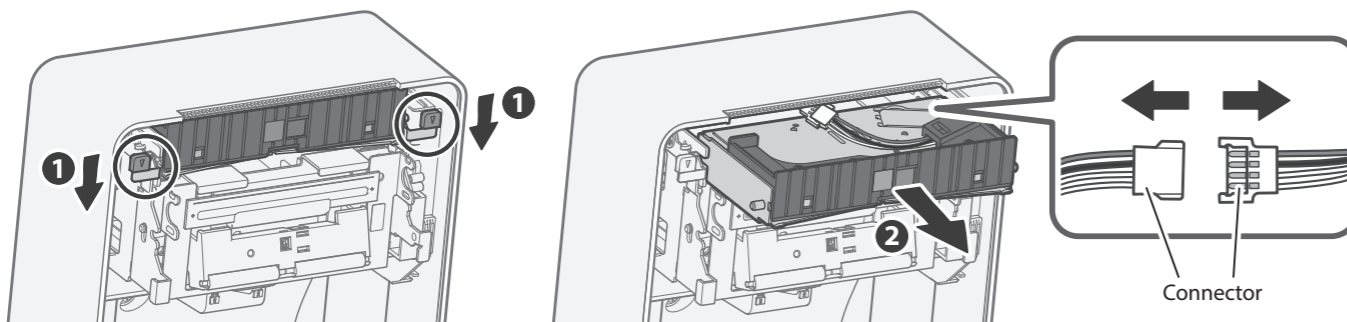
2. Remove the stationary knife.

- Tilt the left and right levers of the stationary knife ①, and remove the stationary knife ②.



3. Remove the cutter unit.

- Lower the left and right levers to unlock the cutter unit ①, lift the unit slightly, and then pull it out toward you ②.
- Disconnect the cable connector and remove the cutter unit.

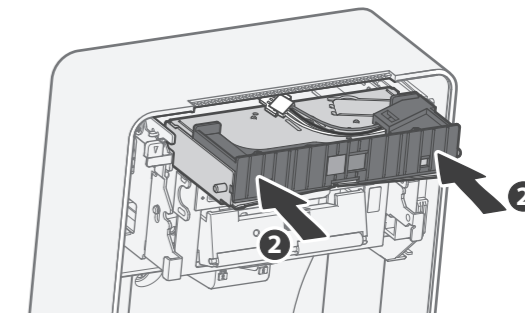
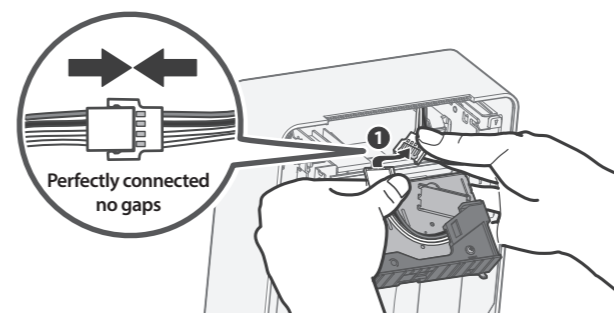


Caution When you disconnect the connector, be sure to hold the connector itself. Do not apply excessive force to the cable and connector on the printer side.

Mounting the Cutter Unit and Stationary Knife

1. Mount the cutter unit.

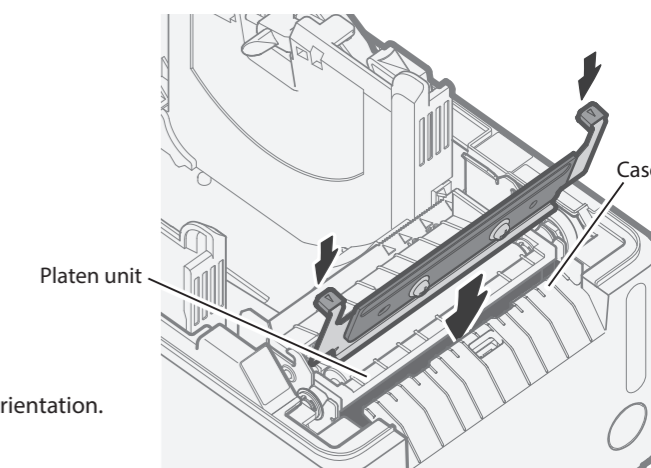
- Securely connect the cable connector ①.
- Insert the cutter unit parallel to the cover as indicated by the arrows and push it in until the left and right levers are locked ②.



2. Mount the stationary knife.

- Insert the stationary knife into the gap between the platen unit and the case, and push it in until it clicks and locks.

Caution When mounting the stationary knife, pay attention to the front or back orientation.



Updating Printer Information (Turning Off **i** LED)

After parts replacement is finished, update the printer information by using the configuration app or operating the printer. This process will update next notification timing, and the **i** LED will be turned off.

Update Procedure by Using Configuration App

Scan the QR code on the right side or search the configuration app to access the download site.

[Configuration app download site](#)



When Using iOS / Android

Use Star Quick Setup Utility

- ① Launch Star Quick Setup Utility.
- ② Connect to a printer.
- ③ Select [Change Printer Settings] > [Parts Replacing].
- ④ Put a check in the box next to "Completed parts replacement", and tap [Apply].

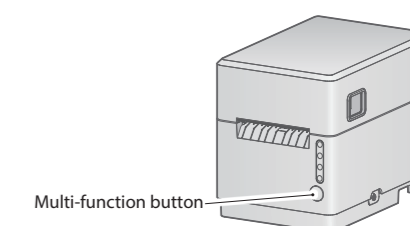
When Using Windows

Use Star Windows Software

- ① From the Windows start menu, open [Star Windows Software] - [Printer Utility].
- ② Connect to a printer.
- ③ Select [Maintenance], [Parts Replacing] tab, put a check in the box next to "Completed parts replacement", and click [Apply].

Update Procedure by Operating Printer

- ① Make sure there is no paper in the printer and close the printer cover.
- ② Turn on the printer power.
- ③ Press and hold the Multi-function button for 5 seconds or more and release it, and within 2 seconds press and hold the button again for 5 seconds or more and release it.



- When disposing of this product, be sure to follow local ordinances and regulations.
- For the owners of other companies' trademarks mentioned in this document, see Trademarks in our website (<https://www.star-m.jp/eng/trademarks.html>).